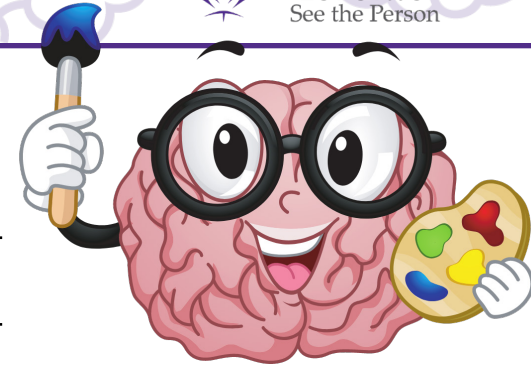


Activity Directions

1. Personalize the graphic of the brain by drawing items/words/terms of what best represents you.
2. Answer the questions that follow.





1. How could you use your gifts/talents/abilities to contribute to the Body of Christ?

2. How are you similar to the main character in the book?

3. How are you different from the main character in the book?

4. How could you be a good friend to someone with epilepsy?

5. Explain how all people are part of the Body of Christ.
